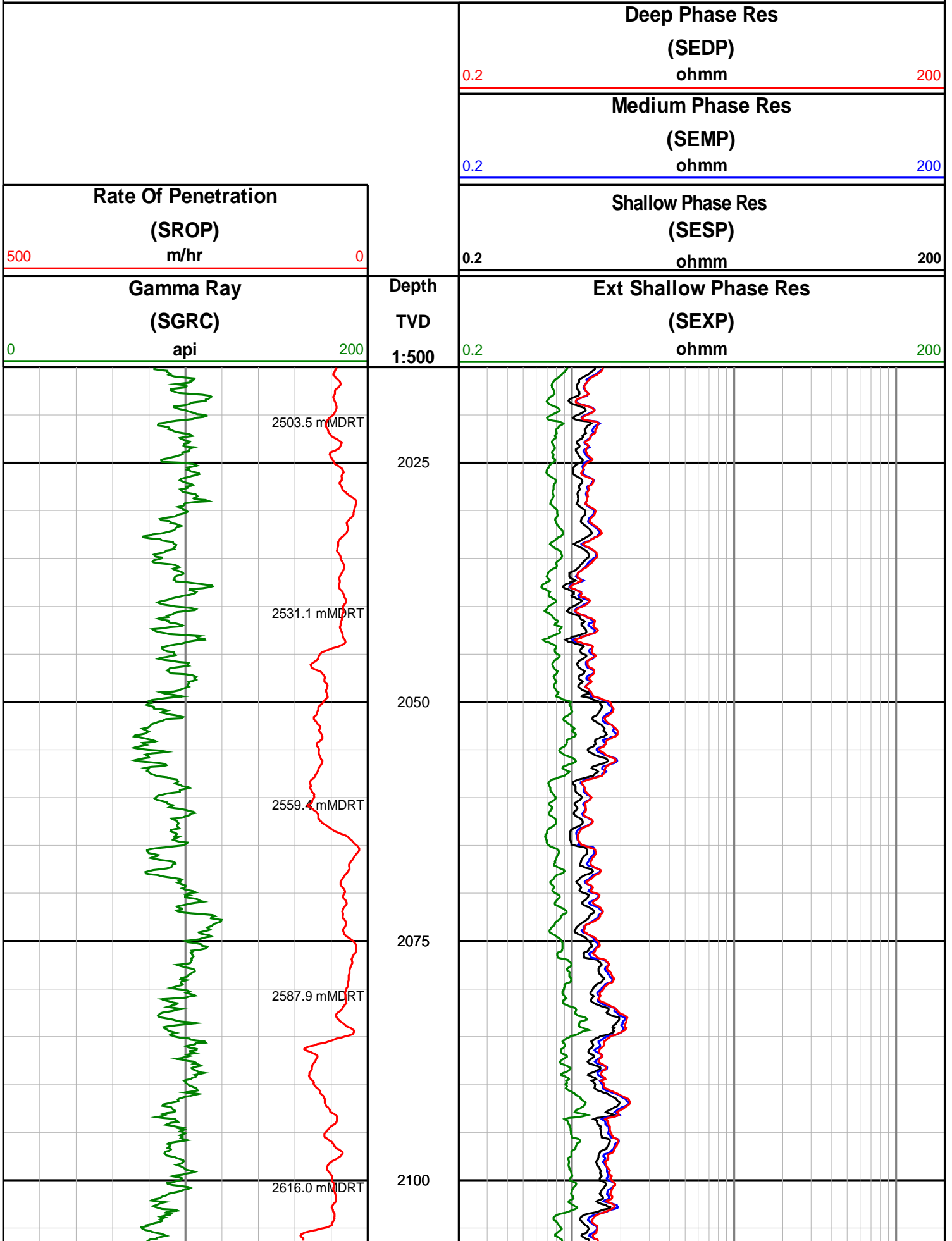
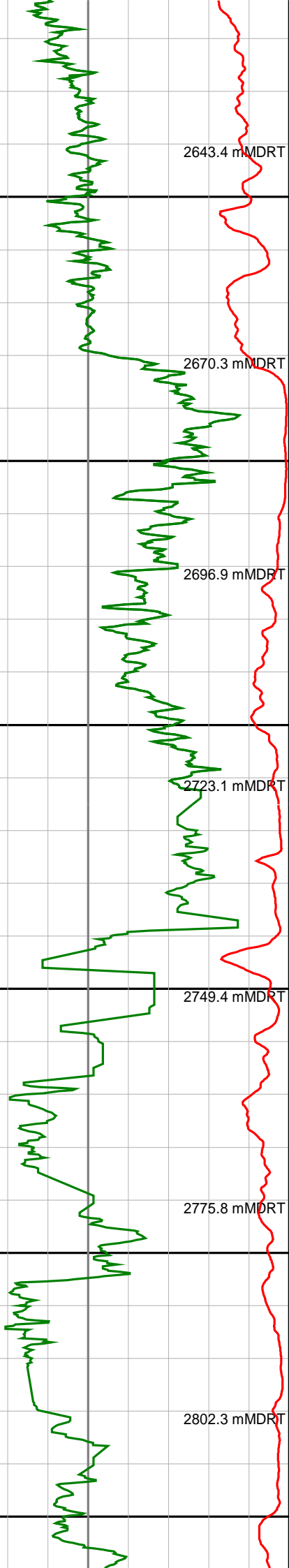


Anzon Australia Ltd

Basker-3

Realtime/Recorded LWD Log (Permanent Datum - LAT)





2643.4 mMDRT

2670.3 mMDRT

2696.9 mMDRT

2723.1 mMDRT

2749.4 mMDRT

2775.8 mMDRT

2802.3 mMDRT

2125

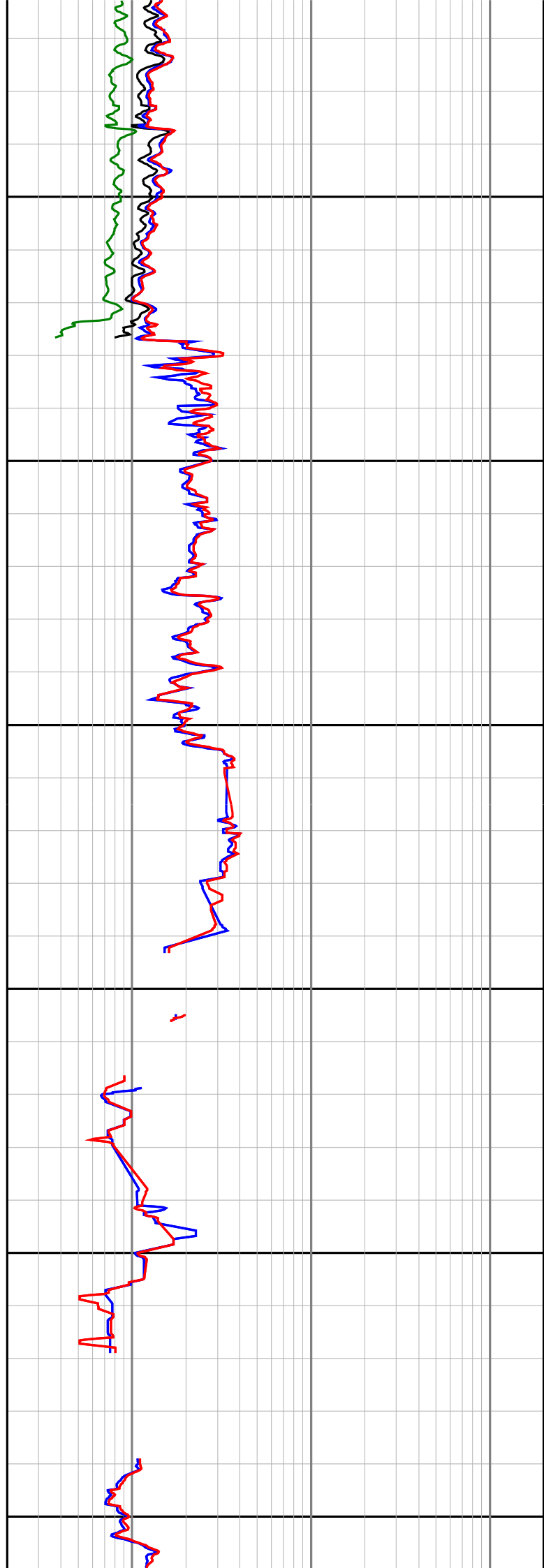
2150

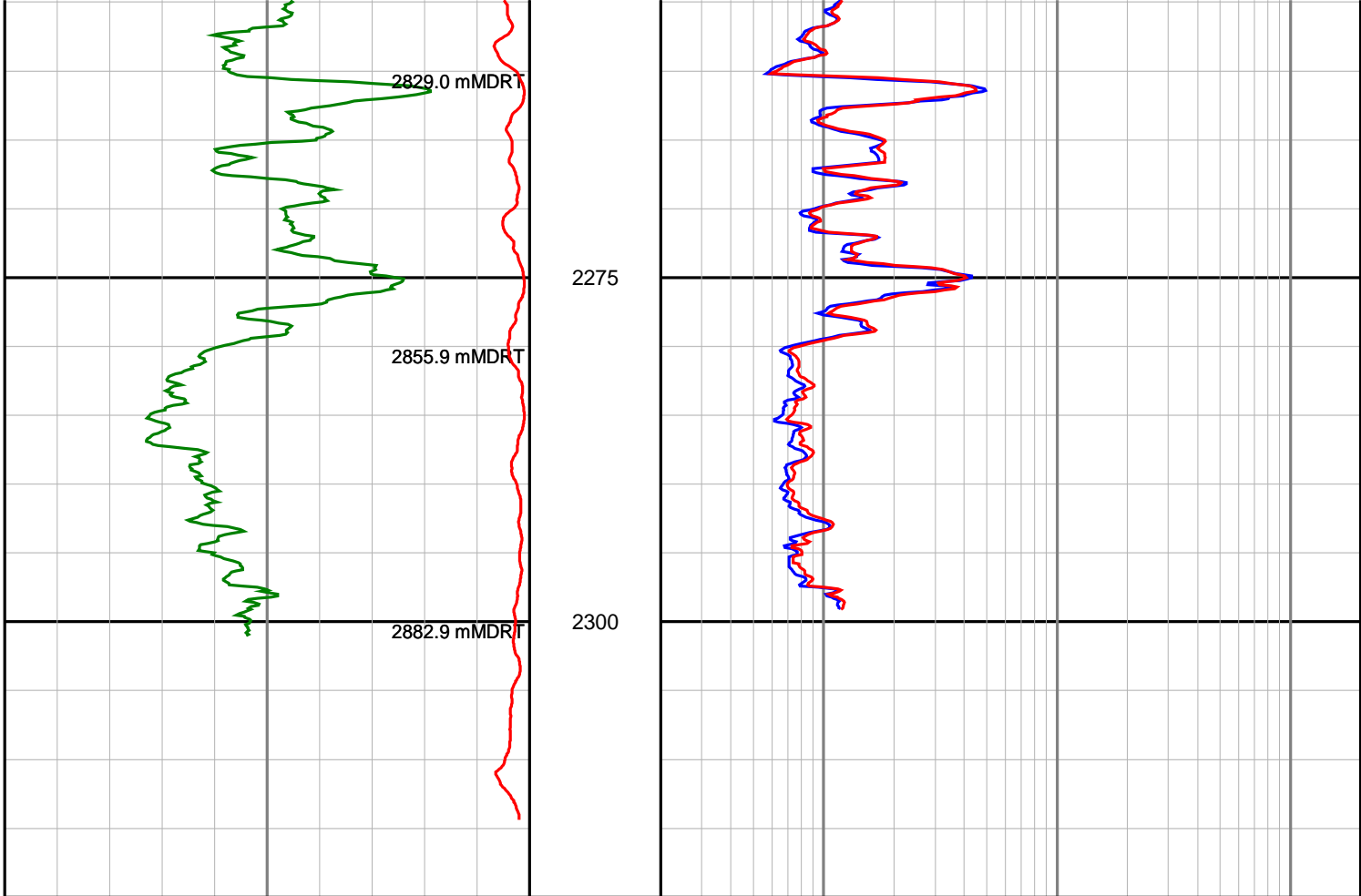
2175

2200

2225

2250





<p align="center">Gamma Ray (SGRC) api</p> <p>0 200</p>	<p align="center">Depth TVD 1:500</p>	<p align="center">Ext Shallow Phase Res (SEXP) ohmm</p> <p>0.2 200</p>
<p align="center">Rate Of Penetration (SROP) m/hr</p> <p>500 0</p>		<p align="center">Shallow Phase Res (SESP) ohmm</p> <p>0.2 200</p>
		<p align="center">Medium Phase Res (SEMP) ohmm</p> <p>0.2 200</p>
		<p align="center">Deep Phase Res (SEDP) ohmm</p> <p>0.2 200</p>